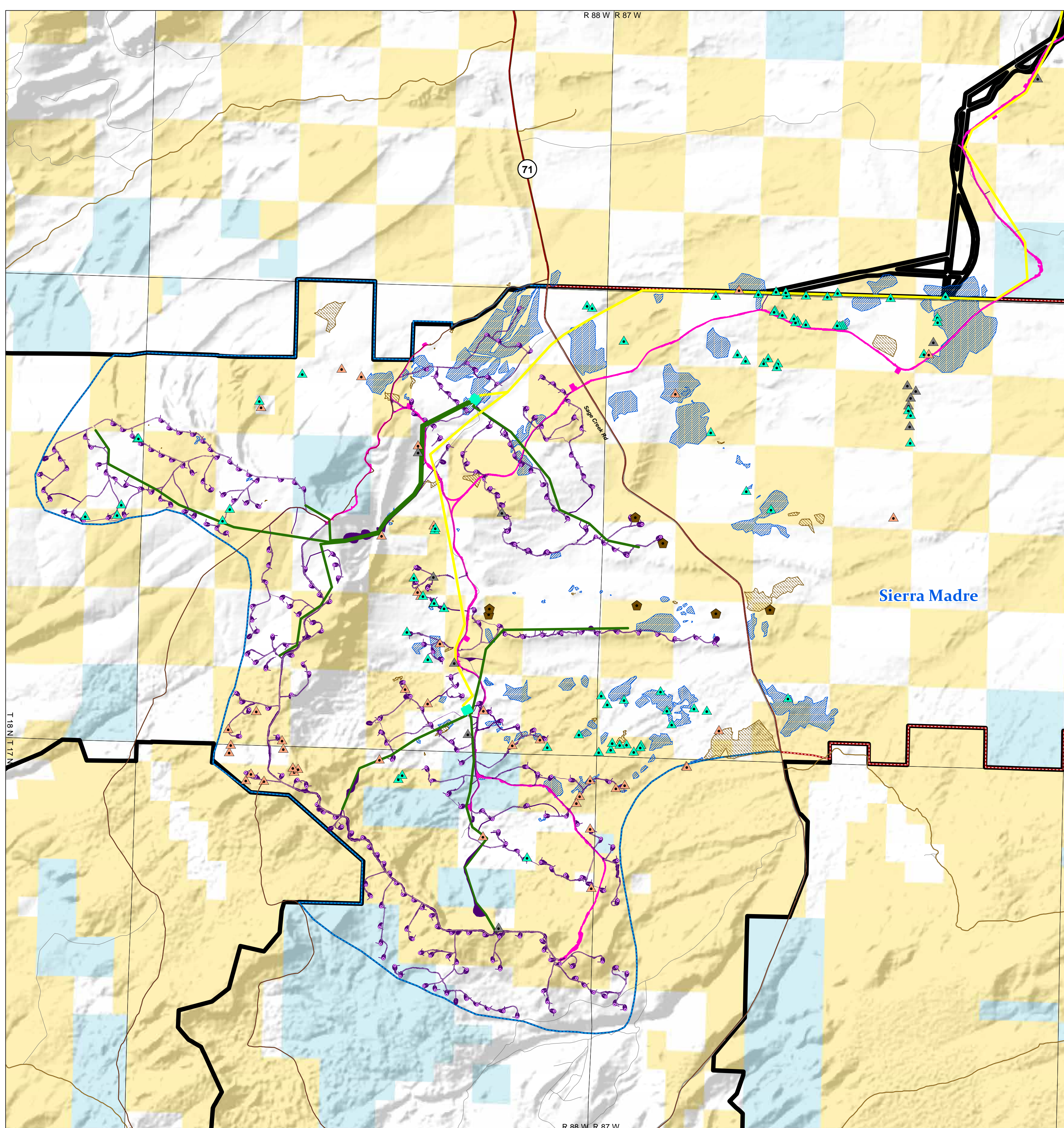


# Chokecherry and Sierra Madre Wind Energy Project

BLM

## Sierra Madre Wind Development Area Small Mammals



**Surface Ownership**

- Bureau of Land Management
- State
- Private
- U.S. Forest Service

- CCSM Wind Energy Project 2012 Record of Decision Boundary
- CCSM Wind Energy Project Phase I Wind Development Area
- CCSM Wind Energy Project Phase II Wind Development Area
- Haul Road and Facilities for Phase I (Haul Road for Phase II not shown)

- Wind Turbine Location
- Overhead Transmission Line
- Electrical Collection Line
- Wind Turbine Facilities Initial Disturbance
- Electrical Substation

**Pocket Gopher Occurrence**

- Northern
- Wyoming
- Unknown

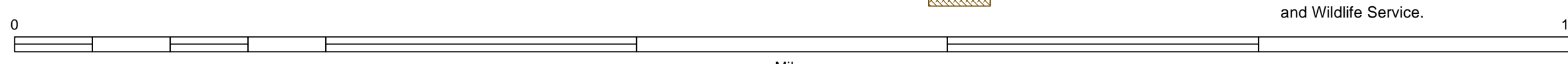
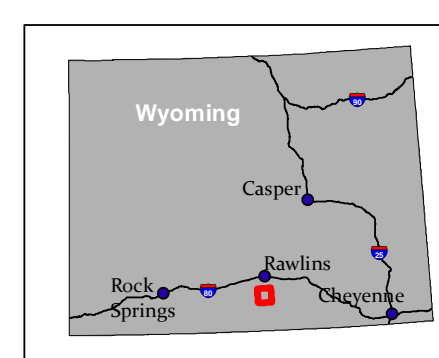
**White-tailed Prairie Dog Habitat**

- Active Colony
- Inactive Colony

**Pygmy Rabbit Occurrence**

- Pygmy Rabbit Site

Note: Wind turbine pad locations shown on this map have not been finalized. Final wind turbine locations will be determined based on coordination with the U.S. Fish and Wildlife Service.



No warranty is made by the Bureau of Land Management for use of the data for purposes not intended by the BLM

High Desert District-Rawlins Field Office, Wyoming

