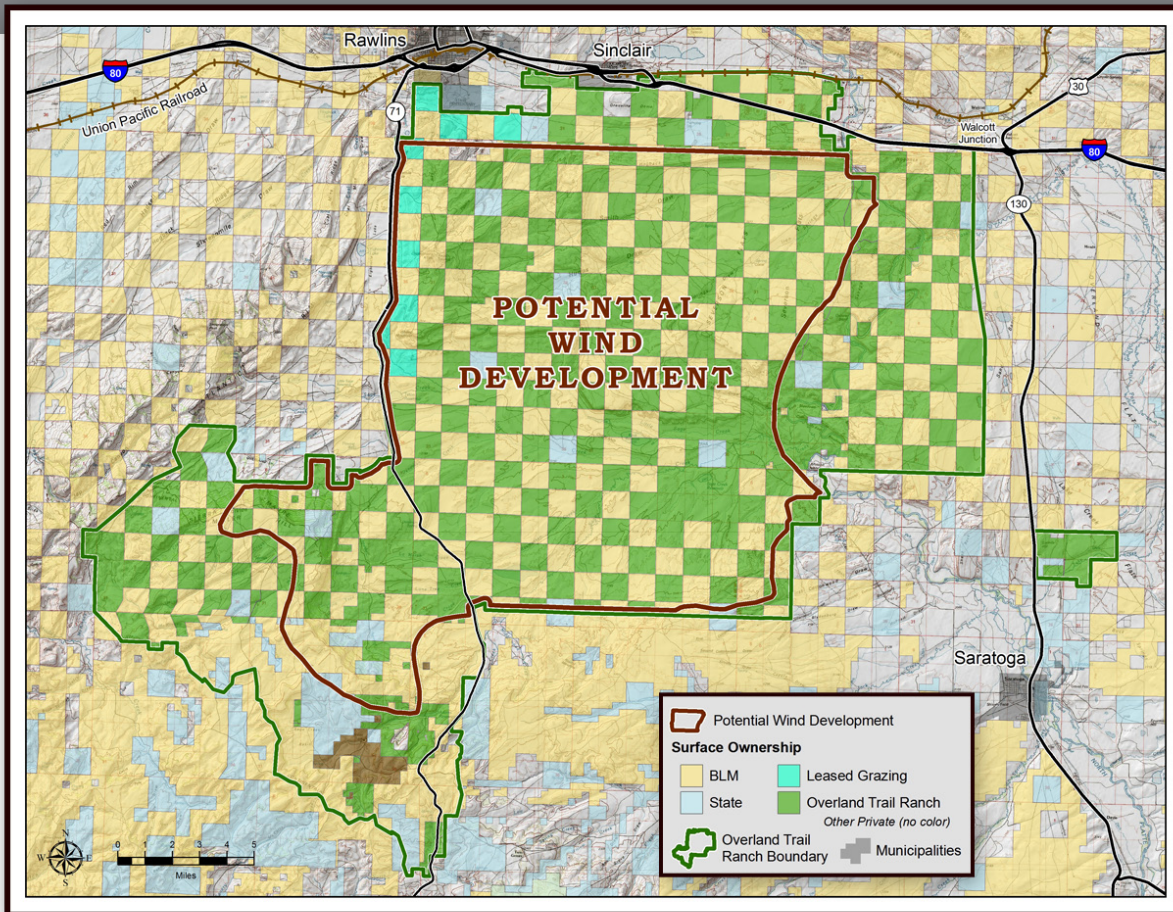


About Power Company of Wyoming LLC

Power Company of Wyoming LLC is a wholly owned affiliate of The Anschutz Corporation, a privately held company based in Denver, Colorado. The Anschutz Corporation, through its affiliates, has been actively involved in the

West for over 50 years in the fields of ranching, agriculture, and energy development. The Anschutz Corporation's activity and investments in the energy field reflect a strong commitment to responsibly developing and managing natural resources.

Project Area Map



Located entirely in Carbon County, Wyoming, the proposed wind project will span a combination of federal land administered by the BLM and private land owned by The Overland Trail Cattle Company LLC. The wind turbine layout will provide for wildlife and other conservation matters, including avoidance of Wyoming's designated sage-grouse core areas.

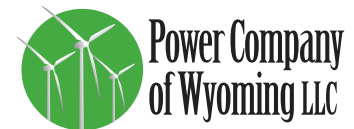


Power Company
of Wyoming LLC

555 Seventeenth Street, Suite 2400, Denver, CO 80202
303.298.1000

www.powercompanyofwyoming.com

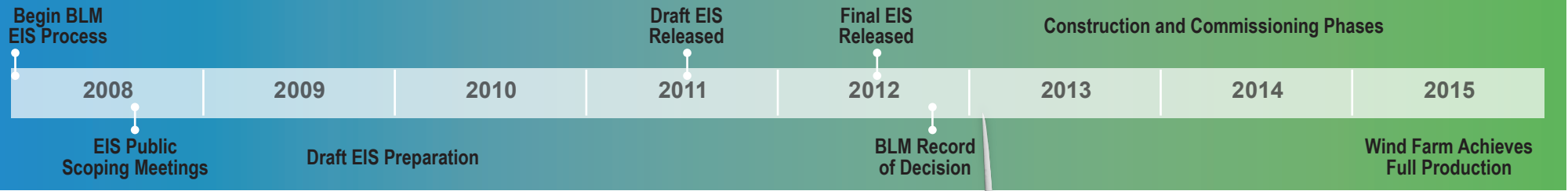
The Chokecherry and Sierra Madre Wind Energy Project is a 1,000-turbine wind farm to be located south of Rawlins in Carbon County, Wyoming. The proposed wind power project is one of the largest in the world. With the potential to generate 2,000-3,000 megawatts of clean energy, the project will ensure a reliable, cost-effective supply of renewable electricity that's unmatched in the West. This output is certain to help America reduce greenhouse-gas emissions, diversify energy sources and meet growing demand for renewable energy resources.



Power Company
of Wyoming LLC

May 2011

When will the project be done?



What benefits will the project bring?

Power Company of Wyoming LLC's Chokecherry and Sierra Madre Wind Energy Project will have the wind turbines and electric infrastructure necessary to reliably and cost-effectively generate approximately 2,500 megawatts of clean, sustainable electricity. It is situated on land that has some of the best winds in the state and in the country. The project area has Class 6 and 7 winds, which are the highest wind classes. While a final turbine model has yet to be selected, assuming a minimum of 1,000 2 MW turbines are installed, the project would produce enough electricity to power about 600,000 to 800,000 homes per year.

In addition, this wind project will:

- Provide zero-fuel-cost, zero-emissions electricity.
- Support national and regional renewable energy goals, such as state-mandated Renewable Portfolio Standards and greenhouse-gas reduction targets.
- Capture and leverage natural resources wisely and responsibly.
- Create thousands of construction jobs and at least 114 permanent operations and maintenance jobs.
- Contribute hundreds of millions of dollars in property taxes and sales and use taxes, among other economic benefits.

What does the project look like?

Once a novelty in the American landscape, views of slim turbine blades sweeping through the air are now familiar as the country aims to increase its production of clean energy. The Chokecherry and Sierra Madre turbines will be installed across about 100,000 acres south of Rawlins, Wyoming, on a 320,000-acre ranch owned by an affiliate of The Anschutz Corporation. However, total permanent land disturbance is estimated to be less than 2,000 acres since wind turbines have a small footprint. Because of their proposed locations, the vast majority of the project's wind turbines will not be viewable either from the city of Rawlins or by travelers on nearby Interstate 80.

Wind turbines have towers approximately 26 stories high, from base to nacelle, in order to capture more energy per turbine. Aerodynamically designed blades can be up to 200 feet long. As wind spins the blades, they power a generator that converts the energy into clean electricity that can be transmitted to utility customers.

How will the planning proceed?

Power Company of Wyoming LLC has and continues to collect wind data for use in siting the wind turbines to make the best use of the project area's high-quality wind resources. Using meteorological towers, PCW has gathered wind data since June 2007. In addition, engineers have completed preliminary studies regarding the constructability of preferred wind turbine sites.

Since the project is partially located on federal lands administered by the Bureau of Land Management, PCW has applied for rights-of-way. The BLM is preparing an Environmental Impact Statement to meet the requirements of the National Environmental Policy Act. The BLM is the lead federal agency responsible for preparing the EIS in coordination with other state and local government agencies.

The BLM will seek public comment on the Draft EIS. Currently, a Record of Decision is expected in 2012. PCW also will obtain other necessary state and local permits. Once the necessary rights-of-way and permits are obtained, construction of the project and commissioning of the wind turbines will occur in a phased approach over multiple years.

Wind turbines usually are painted a very light gray-white to better blend into the landscape, yet remain visible to aircraft.

